



VHA

# Vent Heater

Vent-Heater is use for outdoor venting or indoor vent line termination in a large enclosed area with proper air exchange.

Provides ice-free termination, minimizing safety hazards such as falling ice, water drips, large ice accumulation, and roof damage. The protective outer mesh shields personnel from the high-temperature heater located inside

## Vent Heater

Cryovent exhaust heater is designed to fit on the bayonet outlet of a CSM Cryovent and Phase Separator where the cold discharge gas needs to be warmed prior to venting. Typically used to eliminate long-distance vent lines, the need for insulation or venting into exhaust ducts.

When liquid in the piping system is constantly vaporizing, the vapor exiting the venting device outlet may cause condensation and eventually, frosting. This can be prevented by using a vent heater to provide a heated pathway for the cryogenic vapor exiting the vent outlet, as cold nitrogen vapor is warmed to halt the creation of ice and condensation. This creates a safe environment while minimizing potential pipe strain associated with a non-heated Cryovent.

All Vent Heaters come with CSM renowned customer service, from conceptual design to implementation, and are backed by a one year warranty

## Typical Applications

- Vent outlet for Cryovent and Degasser
- Vent outlet at Phase Separators
- End of venting pipe line

## Features and Benefits




- Can be installed on the bayonet connection outlet of any liquid nitrogen keepful device
- Eliminates ice formation on vent piping
- Eliminates the need for foam insulation on vent piping
- Eliminates the need for a large free space for vent piping
- Provides ice-free termination, minimizing safety hazards such as falling ice, water drips, large ice accumulation, and roof damage
- The protective outer mesh shields personnel from the high-temperature heater located inside

## Related Products:



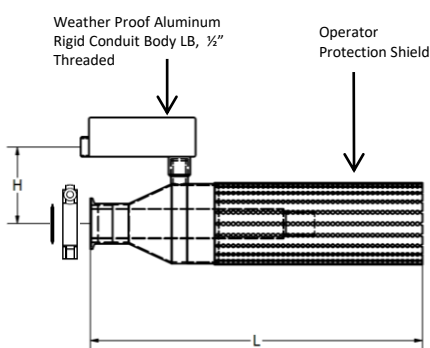
VH10A

# Vent Heater Specifications

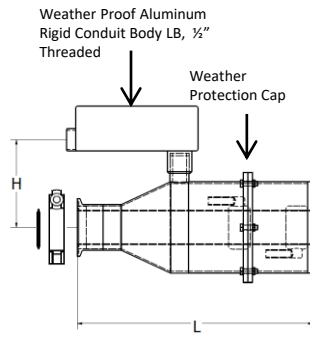
Vent heater Model	VH	VH10A
Material Construction	Stainless Steel Series 300	Aluminium
Application	Indoor  / Outdoor 	Indoor 
Power	150Watt – 450Watt (subject to customer application)	20 W
Voltage/ Amp	24VDC / 110 VAC / 220 VAC (customer to define upon order)	24VDC
Power Connection	Standard Aluminum Rigid Conduit Body LB, ½" Threaded	M12
Standard Testing	Dimensional Check Heater functional test	

## Vent Heater Dimensions

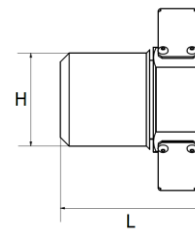
P/N	Application	H	L
VH10A-24DC	Indoor	2.1" (53mm)	3.1"(80mm)
VHA-C5F	Indoor	3.0" (80mm)	10.0" (250mm)
VHA-C10F	Indoor	3.9" (100mm)	15.0" (380mm)
VHA-C15F	Indoor	5.0" (127mm)	15.0" (380mm)
VHB-C5F	Outdoor	3.0" (80mm)	10.0" (250mm)
VHB-C10F	Outdoor	3.9" (100mm)	11.3" (286mm)
VHB-C15F	Outdoor	5.0" (127mm)	15.0" (380mm)



VHA series, 120/220VAC  
Indoor



VHB series 120/220VAC  
Outdoor



VH10A, 24 VDC  
Indoor